

# CERTIFICATE OF LOCATION OF GOVERNMENT CORNER

NORTH QUARTER Corner of Section 30, Township 105 N, Range 41 W, 5<sup>th</sup> P.M.

STATE OF MINNESOTA, County of MURRAY

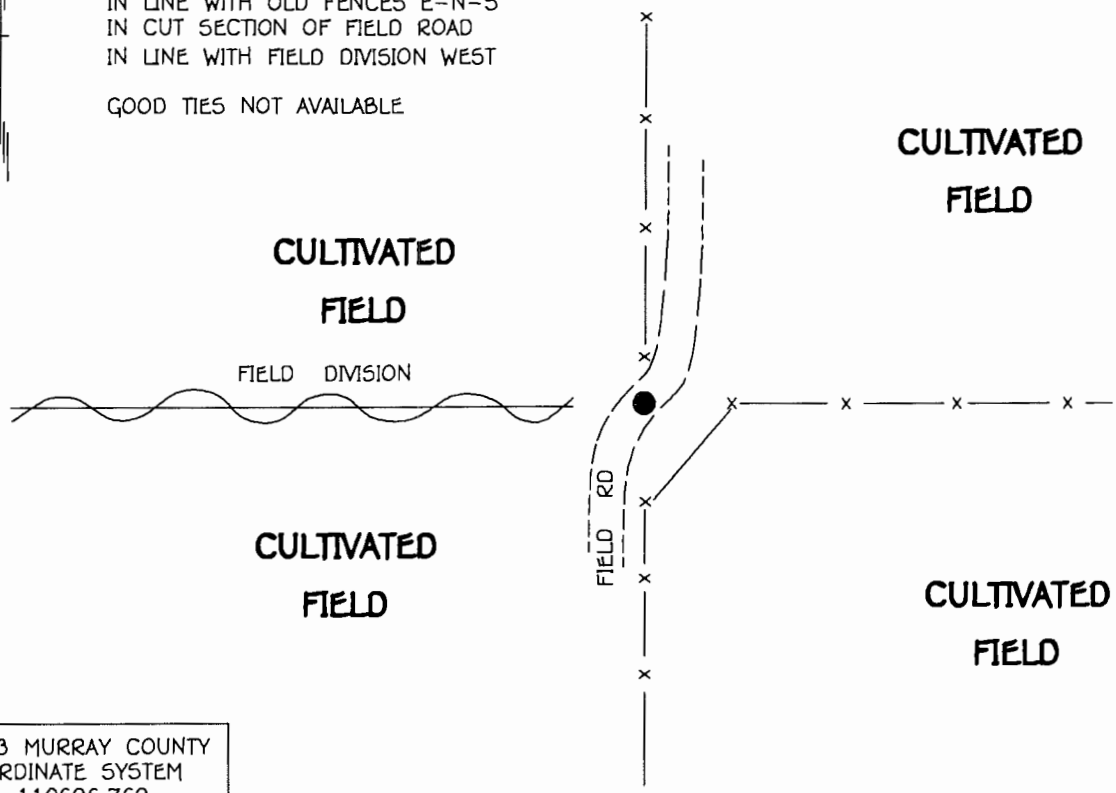
At the corner location shown on the sketch:

- On \_\_\_\_\_ found a \_\_\_\_\_  
DATE
- left monument as found,  lowered monument,  removed monument (explain)
- On 5-21-96 Placed a 3/4" x 24" REBAR WITH ALUMINUM CAP STAMPED  
DATE "DNR SURVEY MARKER", DOWN 1.0'

SKETCH OF REFERENCE TIES



NOTE:  
 MONUMENT IS  
 IN LINE WITH OLD FENCES E-N-S  
 IN CUT SECTION OF FIELD ROAD  
 IN LINE WITH FIELD DIVISION WEST  
 GOOD TIES NOT AVAILABLE



1983 MURRAY COUNTY  
 COORDINATE SYSTEM  
 N = 110696.769  
 E = 487547.589

Statement of evidence relative to this corner location is on back of page.

JUL '96 JBM  
WMA00694.00.00.01

I hereby certify that this document and the data contained herein was prepared by me or under my direct supervision.  
Bruce W. Sheppard 7/12/96  
 SIGNATURE DATE  
 License Number 17003  
 Land Surveyor,  Professional Engineer  
 County Surveyor,  County Engineer

OFFICE OF THE COUNTY RECORDER  
 County of \_\_\_\_\_  
 I hereby certify that this document was filed in the Co. recorders office at \_\_\_\_\_ .M. on the \_\_\_\_\_ day of \_\_\_\_\_ A.D., 19\_\_\_\_  
 County Recorder James V. Johnson  
 By JUL 6 1996, Deputy  
 DOCUMENT NO. \_\_\_\_\_

North Quarter Corner of Section 30, Township 105 North, Range 41 West

The DNR Bureau of Engineering contacted the following for survey information:

Minnesota Secretary of State's Office  
Murray County Recorder's Office  
Murray County Highway Engineer's Office  
Madsen Land Surveying of Fairmont

1861 U.S. General Land Office notes obtained from the Secretary of State's Office show the corner marked with a wood post in a mound with trench and pits as per instructions.

1903 Surveyor's Record Book A, page 186, obtained from the County Recorder's Office, contains a survey by J. W. Woolstencroft. Survey shows a stone and iron pin 3/4" by 16" at corner per previous survey. The corner is shown:

5330 feet from the north quarter corner of Section 19

The above information is also contained in a Surveyor's Record Book obtained from the County Highway Engineer's Office.

1966 May, DNR Bureau of Engineering set a spike for corner at the intersection of fences north, south, east and west. The spike was found to be:

5326.9 feet from the north quarter corner of Section 19

No information is given about the record stone and iron pin.

1996 May 21, DNR Bureau of Engineering found the area of corner to be in a field road where the ground has been excavated for its construction. Scanned the area with an electronic metal detector but no metal attraction was obtained. Set a DNR Survey Marker at the projected intersection of fences north, south and east and found it to be:

5329.89 feet from the north quarter corner of Section 19

Analysis of the above information led the DNR Bureau of Engineering to conclude that the DNR Survey Marker set at the projected intersection of fences north, south and east marks the obliterated location of the corner.